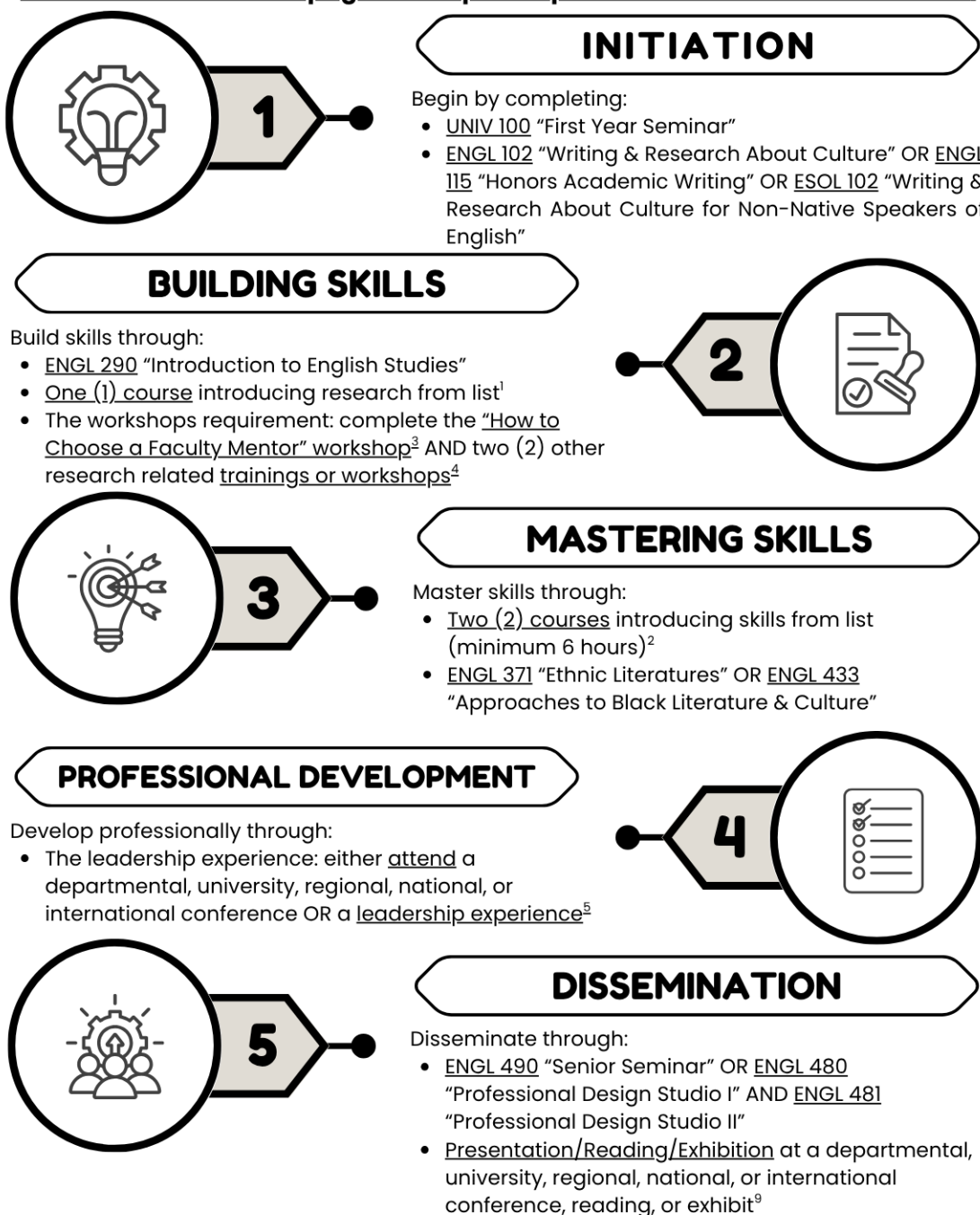


# ASRE PATHWAY OF DISTINCTION IN ENGLISH

This is a general idea of the steps to complete an ASRE Pathway. The goal of this program is for students to begin during their freshman year and complete requirements throughout their college career. There is flexibility in the timeframe, but all requirements must be complete prior to graduation.

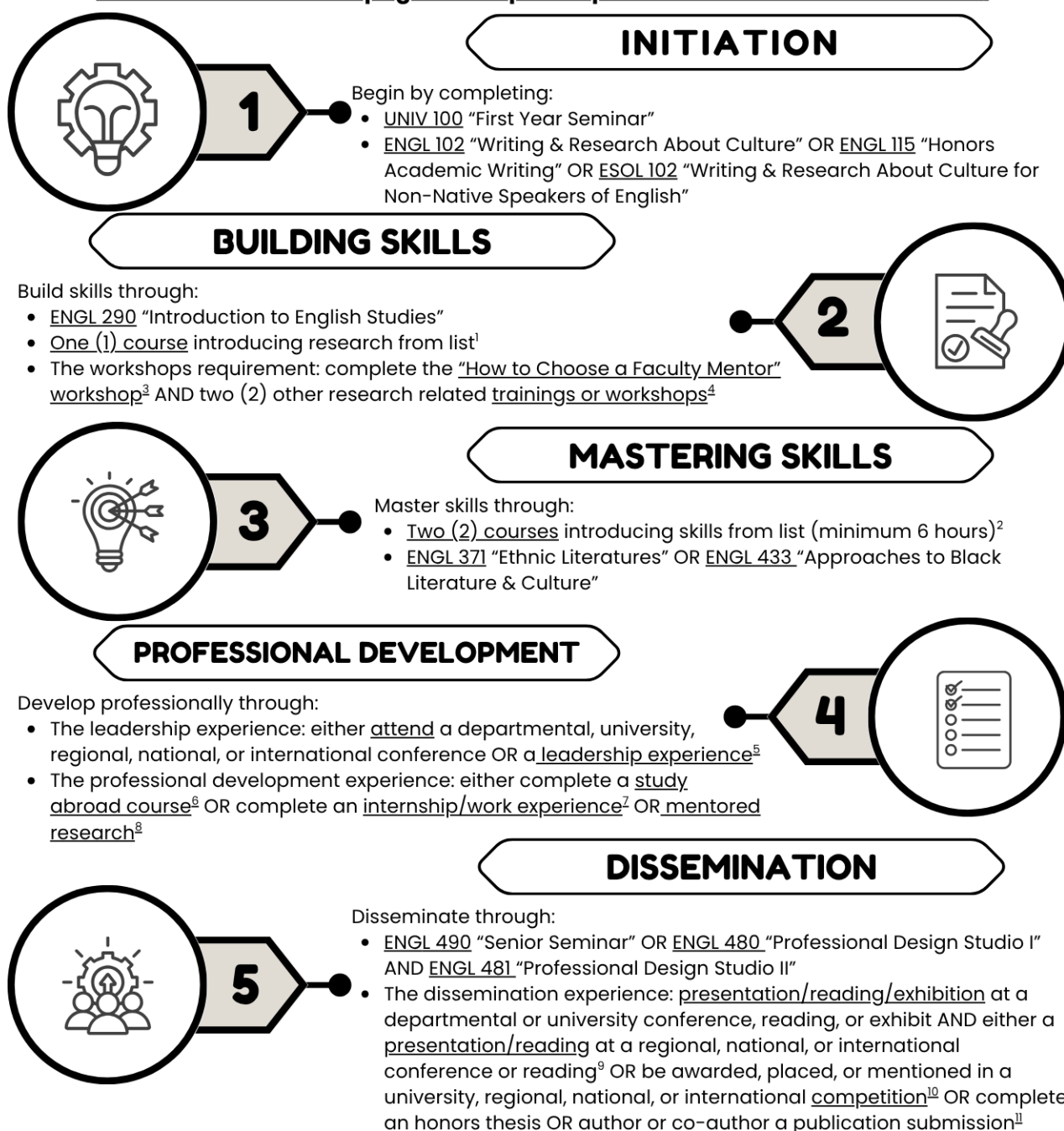
**Please review the next pages for superscript notes with further information.**



# ASRE PATHWAY OF EXCELLENCE IN ENGLISH

This is a general idea of the steps to complete an ASRE Pathway. The goal of this program is for students to begin during their freshman year and complete requirements throughout their college career. There is flexibility in the timeframe, but all requirements must be complete prior to graduation.

**Please review the next pages for superscript notes with further information.**



STUDENT VIEW

See the next page for superscript notes with more information.

Advance SRE Pathway of <b><u>Distinction</u></b> Curricular and Co-curricular* Events Required	Advance SRE Pathway of <b><u>Excellence</u></b> Curricular and Co-curricular* Events Required
<p><b>Curricular</b></p> <ol style="list-style-type: none"> <li>1. UNIV 100</li> <li>2. ENGL 102 <b>OR</b> ENGL 115 <b>OR</b> ESOL 102</li> <li>3. ENGL 290</li> <li>4. One (1) course introducing research<sup>1</sup></li> <li>5. Two (2) courses introducing skills (minimum 6 hours)<sup>2</sup></li> <li>6. ENGL 371 <b>OR</b> ENGL 433</li> <li>7. ENGL 490 <b>OR</b> ENGL 480 <b>AND</b> ENGL 481</li> </ol> <p><b>Co-curricular</b></p> <ol style="list-style-type: none"> <li>8. <u>Workshops</u> How to Choose a Faculty Mentor Workshop<sup>3</sup> <b>AND</b> Two (2) approved workshops or trainings<sup>4</sup></li> <li>9. <u>Leadership Experience</u> Attend a departmental, university, regional, national, or international conference <b>OR</b> Leadership experience<sup>5</sup></li> <li>10. <u>Presentation, reading, or exhibition</u> at a departmental, university, regional, national, or international conference, reading or exhibit<sup>9</sup></li> </ol>	<p><b>Curricular</b></p> <ol style="list-style-type: none"> <li>1. UNIV 100</li> <li>2. ENGL 102 <b>OR</b> ENGL 115 <b>OR</b> ESOL 102</li> <li>3. ENGL 290</li> <li>4. One (1) course introducing research<sup>1</sup></li> <li>5. Two (2) courses introducing skills (minimum 6 hours)<sup>2</sup></li> <li>6. ENGL 371 <b>OR</b> ENGL 433</li> <li>7. ENGL 490 <b>OR</b> ENGL 480 <b>AND</b> ENGL 481</li> </ol> <p><b>Co-curricular</b></p> <ol style="list-style-type: none"> <li>8. <u>Workshops</u> How to Choose a Faculty Mentor Workshop<sup>3</sup> <b>AND</b> Three (3) approved workshops or trainings<sup>4</sup></li> <li>9. <u>Leadership Experience</u> Attend a departmental, university, regional, national, or international conference <b>OR</b> Leadership experience<sup>5</sup></li> <li>10. <u>Professional Development</u> Study Abroad<sup>6</sup> <b>OR</b> Internship/Work Experience<sup>7</sup> <b>OR</b> Mentored Research<sup>8</sup></li> <li>11. <u>Dissemination</u> Present, read, or exhibit at a departmental or university conference, reading, or exhibit <b>AND</b> Present or read at a regional, national, or international conference or reading<sup>9</sup> <b>OR</b> Awarded, placed, or mentioned in a competition<sup>10</sup> <b>OR</b> Honors thesis <b>OR</b> Peer reviewed publication submission<sup>11</sup></li> </ol>

## English ADVANCE SRE Pathways

### Superscript Notes:

\* ASRE-approved courses only. Students who have earned credits for a course that is not ASRE approved may petition to substitute that course with a course identified as providing research skill. The SCRCS Advance office will review the petition for approval. Approved substitutions are only for the purpose of completing an Advance Pathway and are not approved as substitution for the degree.

<sup>1</sup>Choose from ENGL 223, ENGL 301, ENGL 332, ENGL 351, or ENGL 365

<sup>2</sup>Choose from ENGL 405, 409, 410, 425, 432, 440, 452, 455, 458, 459, 463, 470, 472, 482, or 496

<sup>3</sup>This online (recorded) workshop is available at <https://advance.louisiana.edu/resources/workshops/advance-asre-workshops>

<sup>4</sup>Approved workshops or trainings can include, but are not limited to: SCRCS, library, or university workshops or CITI trainings. SCRCS Advance Workshops can be found on the UL Lafayette SCRCS website. 1 in person SCRCS workshop is equivalent to 2 virtual SCRCS workshops. Other workshops/trainings focused on research skills are possible by approval from the English department.

<sup>5</sup>Can include but is not limited to assist with hosting a conference or event. Conference: Examples include, but are not limited to, Advance Undergraduate Research Showcase and UL Undergraduate Research Conference

<sup>6</sup>Study Abroad course will need approval from English department.

<sup>7</sup>Internships may be internal or external to UL Lafayette. ENGL 461 or ENGL 463 may count.

<sup>8</sup>Mentored research includes, but is not limited to, volunteer, scholarship, paid from grants or SUREs (Summer Undergraduate Research Experience).

<sup>9</sup>Examples include, but are not limited to, Advance Undergraduate Research Showcase and UL Undergraduate Research Conference

<sup>10</sup>Competition may be university, regional, national, or international competition

<sup>11</sup>May be author or co-author